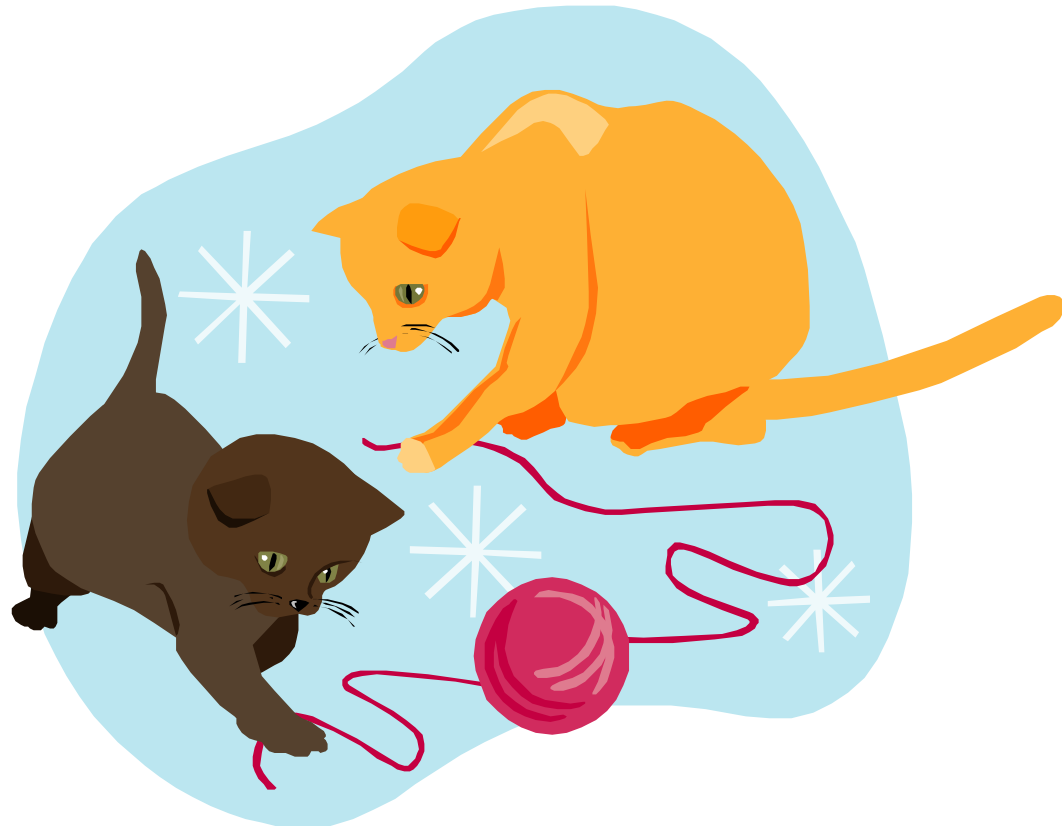


# The ATM Machine

# Rapid Word Recognition Chart

<b>full</b>	<b>many</b>	<b>there</b>	<b>are</b>	<b>does</b>	<b>what</b>
<b>does</b>	<b>what</b>	<b>full</b>	<b>many</b>	<b>there</b>	<b>are</b>
<b>there</b>	<b>are</b>	<b>does</b>	<b>what</b>	<b>full</b>	<b>many</b>
<b>full</b>	<b>many</b>	<b>there</b>	<b>are</b>	<b>does</b>	<b>what</b>
<b>does</b>	<b>what</b>	<b>full</b>	<b>many</b>	<b>there</b>	<b>are</b>









- What do you think jumped out of the machine?
- What clues did you read in the story?
- Why didn't the author tell you what jumped out?
- What do you get from an ATM machine?
- What would you do if you heard something in a strange place?